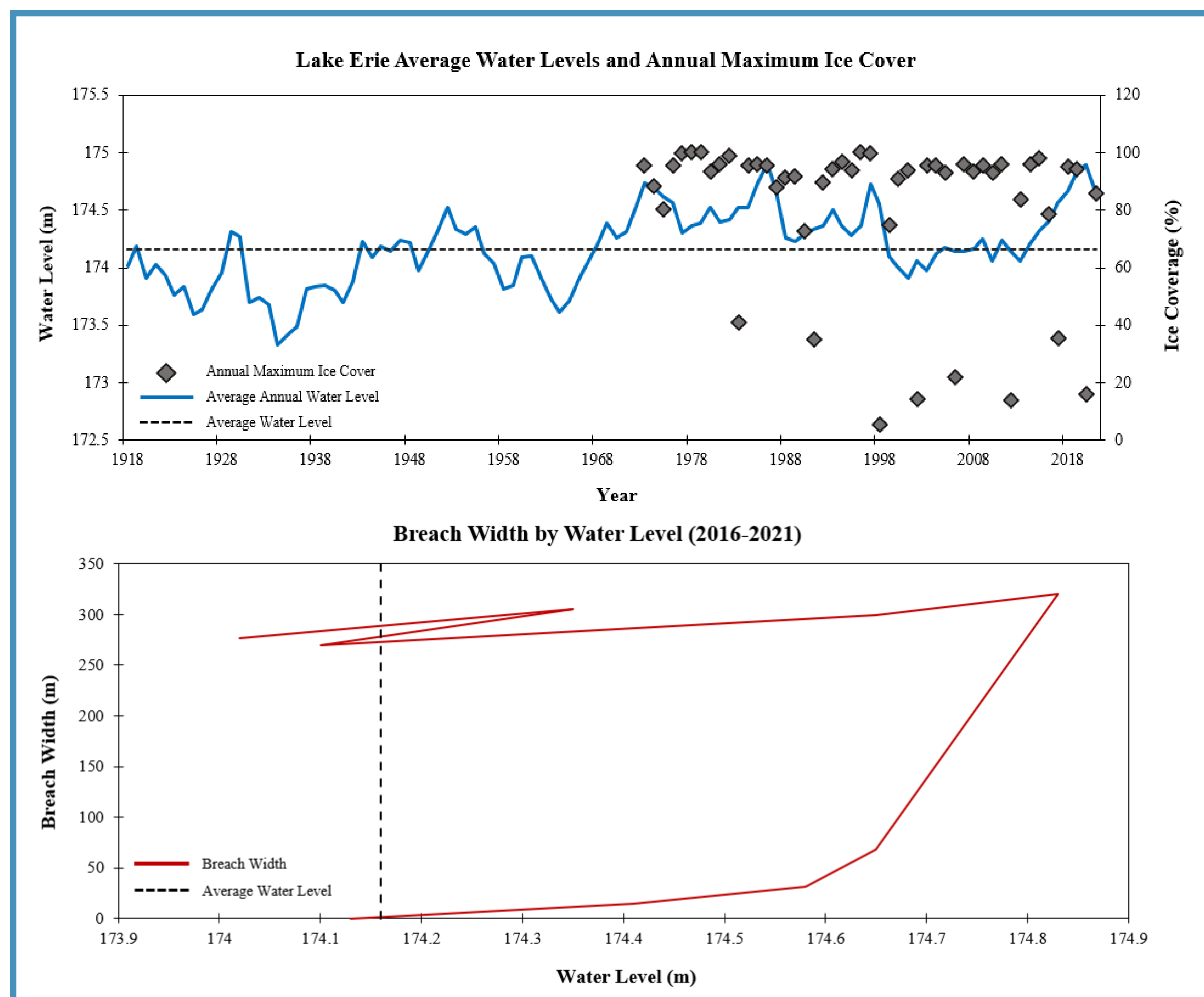


THE EVOLUTION OF HILLMAN MARSH



Did you know?

- The rapid expansion of the breach coincided with record high water levels (175.14 m) and near record low ice cover (15.9%) in 2019 and 2020, respectively.
- Hillman Marsh experienced peak shoreline retreat between 2016-2020, at -5.46 m/y.
- Excessive shoreline development to the North and South of Hillman Marsh has prevented the natural recovery of the barrier beach.
- The erosion of the barrier beach has resulted in the endangerment of several Species at Risk, including the Common Hop-tree and Scarlet Ammannia.