



Essex Region
Conservation Foundation
enriching the place for life

2022 Gratitude Report



Thank you.

A Message from the President & the Executive Director

When the calendar turned to 2022, the world was still in a state of flux. Public health orders limiting gatherings were in place, and in-person fundraising events were still a question mark. But, what remained certain, was the increased value assigned to conservation areas, trails and natural spaces.

In May, as normalcy returned, the Foundation ploughed full speed ahead with its fundraising plans for 2022. In May, we received word that our application for re-accreditation to the prestigious Imagine Canada Standards Program had been approved, following a rigorous process. This recognition ensures donors that your generous contributions are being stewarded with the utmost attention to transparency and accountability.

In June, two new greenway entrances were opened, further enhancing trail amenities in our region. Visitation to conservation areas and trails continued to remain strong, underscoring the continued importance of these places for our physical and mental well-being.

Partners in Sustainability again continued their incredible support of Inspiring Future Conservationists and Eco-Stewards.

Over the summer, our Golf Tournament and Bike Tour both achieved their highest fundraising successes to date, thank to the incredible generosity of players, cyclists, sponsors and donors – thank you!

In late fall, we were honoured to team up with the Caldwell First Nation and Jamieson Wellness to commence the restoration of a 40 acre property owned by the Nation. The Holiday Beach Cycling Trail was constructed, which will provide another significant cycling facility to our region. And, dozens of generous donors participated in the world's largest day of generosity and raised more than \$30,000 toward the repairs needed to the Homestead.

Indeed, there is much to celebrate as we reflect on the past year. However, the challenges associated with the changes to the Conservation Authorities Act identified in Bill 229 and Bill 23 continue to cause concern, and reinforce the importance of the Foundation's work – and its generous donors – to ensure the ongoing protection of natural heritage features in our region. In looking ahead, the Foundation is excited to join ERCA in recognizing its 50th year of conservation, and will launch a new fundraising event in June supporting trees and trails. Stay tuned for further details!

As always, none of these conservation achievements would be possible without the dedication and generosity of so many supporters. In total, over 2022, you contributed over \$478,000 to conservation efforts. Thank you! We could not be more appreciative, and look forward to continuing to work together, with you, in striving for future of sustainability in our region.



A handwritten signature in black ink, appearing to be 'C. Wales'.

Claire Wales
President



A handwritten signature in black ink, appearing to be 'T. Byrne'.

Tim Byrne
Executive Director

Shared Mission, Vision and Goals

The Foundation's Strategic Plan directs our fundraising priorities. Pillars include Greening our Region and Taking Climate Action, Connecting our Region by Trails, Inspiring Future Generations through Outdoor Education, and Preserving our Heritage. The following is an overview of what donor generosity allowed to be accomplished in 2022 in each of these priority areas.

Shared Mission

Improving our environment to enrich our lives.

Shared Vision

The Essex Region is a sustainable, resilient and vibrant place with healthy and thriving watersheds, Great Lakes, and a green culture.

Our Goals

The Essex Region Conservation Foundation will raise awareness and funds to improve the environment of the Windsor-Essex region through a variety of projects and programs that enrich our region as the Place for Life, and become the environmental foundation of choice in the Windsor-Essex-Pelee Island region.



Greening Our Region & Taking Climate Action

Jamieson Wellness Supports Significant Restoration with Caldwell First Nation

A 40 acre restoration project is underway at the Caldwell First Nation, thanks to significant support from Jamieson Wellness. In November, members from the Nation and employees from Jamieson Wellness were joined by students from Leamington District Secondary School to plant 100 trees and wetland plants on this former agricultural land as the first phase of this three-year project.

Caldwell First Nation is a strong, sovereign First Nation fighting assimilation and respecting other nations the Creator has placed in their path. The People of the Lake, they are working to build a foundation with other nations that embraces trust, harmony and honour.



In 2020, the Nation was granted Reserve Status in Leamington, following a 230 year quest to regain their ancestral grounds. The traditional lands of the Caldwell Nation stretch from the Detroit River all the way to Long Point on the north shore of Lake Erie, including Point Pelee National Park.

As leaders in health and wellness for nearly 100 years, Jamieson Wellness believes it is their responsibility to actively support the well-being of its employees, consumers, partners and communities. As a result of this generous donation, 40 acres of forest and wetland habitat will be restored to mitigate flooding, take climate action, and help provide much needed habitat in the region.

"Jamieson has been operating in the Windsor-Essex region for nearly 100 years. We've been fortunate to have been able to collaborate with ERCF on several conservation projects in the area as a proud member of the community. We believe strongly in the restoration plan that ERCA and Caldwell First Nation are undertaking and are honoured to be able to support this work that is so fundamental in the journey towards compassionate and active Reconciliation."

-Shawna Ketter, Senior Director of ESG and Culture at Jamieson Wellness



Maidstone Restoration – Honouring Joe and Jesse Mullins

In May, over 50 members of the Mullins family came together at Maidstone Woods Conservation Area to plant trees honouring brothers Joe and Jesse Mullins. In late 2021 and early 2022, the family raised more than \$16,000 to reforest the former field adjacent to the Conservation Area. The first 100 large stock trees were planted by family members. The remainder of the site will be planted with seedling trees this spring, and a walking path will connect with the existing trail system.

The impact of the Mullins family's generosity will result in the addition of nearly 2,000 trees to our regional landscape, expanded forest habitat, and a lifelong memorial to their beloved family members.





Connecting Our Region by Trails

Tilray Brands Plant Positivity Community Entrance

The Tilray Brands Plant Positivity Community Entrance in Essex was opened in June with pergolas for shade, enhanced parking, new landscaping and the addition of a native pollinator garden. This central location is prominent along Walker Road (County Road 11), and is the closest entrance point to the intersection between the Chrysler Canada Greenway and the Cypher Systems Group Greenway, providing safe, off-road trail connectivity across the Windsor-Essex region.

Plant Positivity is one of Tilray Brands' Corporate Social Responsibility platforms to give back to both people and the planet. Plant Positivity champions the incredible power that plants have in overall well-being and providing greater access to green spaces for communities.

The Tilray Brands Plant Positivity Community Entrance enhances the Greenway trail system, and provides a resting stop with shaded areas for trail users from across the region. Trails and conservation areas are critically important to the health of a community. In fact, it has been estimated that for each dollar spent on building, maintaining, and using trails, nearly three dollars were realized in reduced health care costs by the trail users due to improvements in their health, and the impact of this gift to the community cannot be overstated.

"The new Tilray Brands Plant Positivity Community Entrance is an important amenity that enhances the trail system in our region, encourages healthy lifestyles, and provides an economic benefit to the entire Windsor-Essex community. We thank Tilray Brands for its leadership in corporate social responsibility, and believe that this investment in this community will inspire other businesses."

-Claire Wales, President, Essex Region Conservation Foundation.



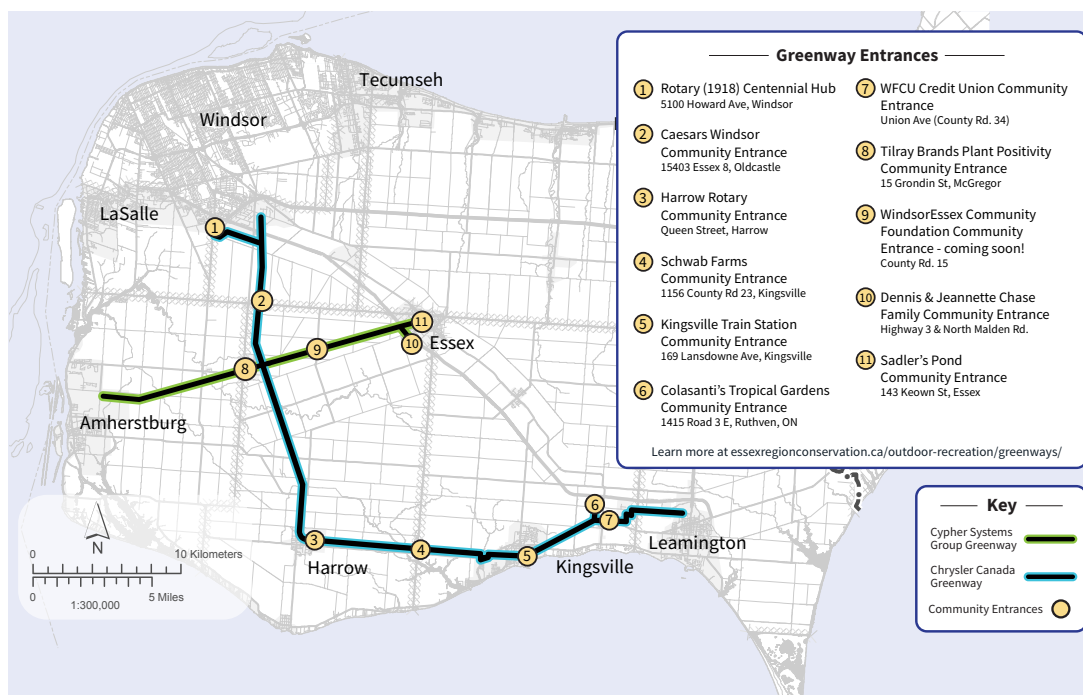
WFCU Credit Union Community Entrance

There's a new access point to the Chrysler Canada Greenway, thanks to the opening of the WFCU Credit Union Community Entrance on June 2.

Located on Union Avenue (County Rd. 34) in Kingsville, the WFCU Credit Union Community Entrance is the first point of welcome to the Town of Kingsville for walkers, joggers and cyclists travelling from the east along the Chrysler Canada Greenway. The WFCU Credit Union Community Entrance features a resting area, bike repair station, parking and signage to promote this trail access point in Kingsville.



The Chrysler Canada Greenway opened in the year 2000 and stretches nearly 50 kilometres from Leamington to Harrow, and then north to Tecumseh. It intersects with the Cypher Systems Group Greenway which connects Amherstburg to the urban centre of Essex. With the addition of the Rotary (1918) Centennial Hub in 2017, the system now connects all municipalities in the Windsor-Essex region with safe, off-road trails.



Trails increase the value of nearby properties, boost spending at local businesses, and provide active transportation to cut fuel expenses. Homebuyers rank walking and biking paths as one of the most important features in choosing where they want to live. The new WFCU Credit Union Community Entrance is an important amenity that enhances the trail system in our region, encourages healthy lifestyles, and provides an economic benefit to the Town of Kingsville, and the entire Windsor-Essex community.

On behalf of the families who will access the Greenway trails through the WFCU Credit Union Community Entrance for recreational enjoyment; members of the workforce who will use it for environmentally-friendly and lower cost transportation; from the businesses who will benefit and from the community at large – the Essex Region Conservation Foundation expresses its sincerest appreciation to WFCU Credit Union for this important gift to the community.



Holiday Beach Cycling Trail

As the year drew to a close, so did construction on the long-awaited Holiday Beach Cycling Trail. Funded with a donation from the Amherstburg Community Foundation, funds raised through the Essex Region Bike Tour, and donations from dozens of individuals, this 2 kilometre single track cycling loop will become a valued addition to the recreational activities at Holiday Beach, and a destination for cycling enthusiasts. The trail's Grand Opening will be celebrated in spring, 2023.





Inspiring Future Generations Through Outdoor Education

Partners in Sustainability

Community leaders continued to support conservation education programs through the Partners in Sustainability – Inspiring Future Conservationists and Eco-Stewards program.

A compelling body of evidence clearly shows that introducing kids to nature has numerous health benefits, including increased physical activity, healthier body weight, better concentration, reduced symptoms of ADHD and anxiety, and improved energy. More than 350,000 students across Windsor and Essex County have participated in ERCA's outdoor education programs since 1974.

Curriculum-based experiential learning opportunities are provided at four conservation areas across the Essex Region and in outdoor school yards on topics including watershed management, Great Lakes protection, ecosystem health, flooding and erosion, natural resources and sustainability, and natural and cultural heritage.

The Hearn Family immediately stepped in as the program's Gold Sponsor, and completed the second of their five year commitment. John & Shannon Omstead and Family, long-time sponsors of conservation education programs, are the program's Silver Sponsors. Enbridge Gas Ltd, Hastings LaSalle Property Inc., Manz Contracting, the Margaret & David Reid Nature Fund, ROCK Developments, the Rosati Group, the Scott Family Foundation and Timberland Homes have invested in the children of this region as Bronze Sponsors of these important programs, and Facca Inc. made a second contribution.

On behalf of the thousands of children who benefit annually from outdoor education programs, the Essex Region Conservation Foundation is incredibly grateful to all of the remarkably generous sponsors for this investment.



Partners in Sustainability



HEARN
Family



John & Shannon Omstead and Family



HASTINGS LaSALLE
Property Inc.



Margaret & David Reid
Nature Fund



ROSATI
DEVELOP • DESIGN • CONSTRUCT



SCOTT FAMILY FOUNDATION



TIMBERLAND
HOMES



Annual Support



FACCA INC.

Solcz Family Foundation Forest

In 2018, the Solcz Family Foundation generously committed to Connect Kids with Nature and create the Solcz Family Foundation Forest. While the pandemic forced us to do things a little differently, over the course of three planting seasons, more than 1,300 youth & families have had the opportunity to plant trees. Youth and New Canadians from across the region were engaged, and transportation was provided to ensure equal access for all.

Participants developed a greater connection with nature and our impact on our surrounding world through curriculum-based lesson plans provided in schools, and through interpretation and experiential education.

Nearly 200 secondary school students gained field experience and leadership skills as they received elevated training and supervised younger students in proper tree planting techniques.

This 50 acre former agricultural property has now been restored with native Carolinian trees and wetland species to improve habitat and biodiversity at the Solcz Family Foundation Forest. The growth of trees even since the first planting in 2019 has resulted in birds of prey, waterfowl and aquatic birds using the site for feeding, breeding, nesting and stopping over. Amphibians and reptiles spotted onsite include the Endangered Eastern Fox Snake. Mammals such as squirrels, chipmunks, raccoons and deer also left signs of their presence on site. As water moves through Lebo Creek, into the wetlands on site, the plant material will help to remove pollution and sediment prior to draining into the Hillman Marsh watershed, and eventually Lake Erie. As well, these additional trees help to mitigate flooding and fight climate change.

Thank you to the Solcz Family Foundation for allowing Kids to Connect with Nature while creating the Solcz Family Foundation Forest!





Preserving Our Heritage

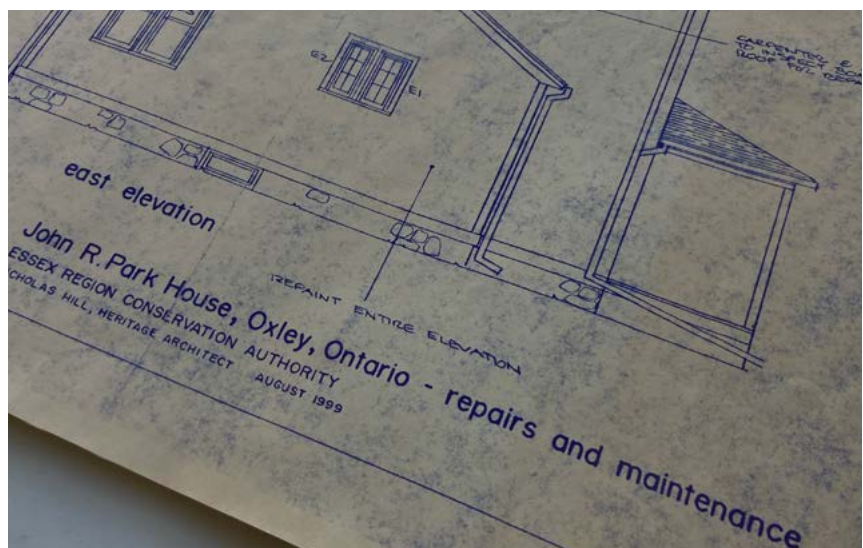
Supporting Restoration at the John R. Park Homestead

The John R. Park Homestead has been welcoming visitors as a museum and conservation area since 1978. This unique 19 acre property on the shore of Lake Erie is used extensively to provide experiential, curriculum-connected outdoor education programs for students; it attracts tourists to our area and it preserves and interprets the history of our region for nearly 20,000 visitors annually.

But, these nearly 200 year-old buildings require extensive restoration work to ensure that they will be maintained for decades to come. Built on the shores of Lake Erie and vulnerable to its wicked storms and relentless weather events, the historic home and eleven outbuildings require skillful repair and detailed repainting in a manner consistent with their historical significance. The buildings require renewal and restoration in a number of areas, including significant foundation work, structural repairs, replacement and repair of windows and doors and more.

In 2022, a comprehensive architectural review was undertaken to detail all of the work required to ensure the Homestead can be protected and preserved. **Nearly \$1 million of work is required** to the twelve buildings that comprise the John R. Park Homestead Conservation Area, with nearly \$400,000 needed immediately.

Thanks to generous donors and reserve funds, nearly \$300,000 has been raised toward this work, but there's still a long way to go to ensure the Homestead's long-term preservation. This effort will continue to be the Foundation's most pressing fundraising need in the coming years.



Giving Tuesday Success!

On November 29, dozens of donors participated in #GivingTuesday- the world's largest day of generosity, and raised funds to Help the Homestead! Thanks to an anonymous donor and the Foundation's President Claire Wales, gifts up to \$20,000 were matched, allowing donors to double their impact.

In total, **\$30,605** was raised by generous donors in support of the urgent repairs to the John R. Park Homestead.

Thank You!

\$30,605

www.givingtuesday.ca



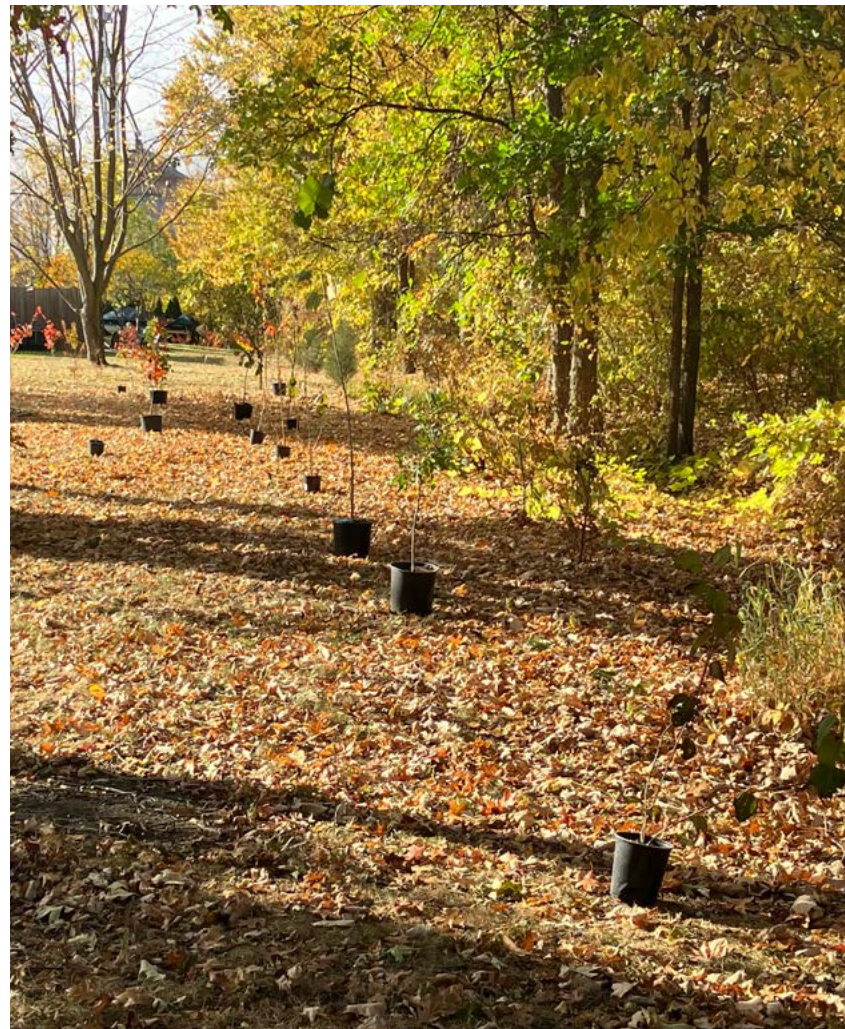


Building & Maintaining A Responsible, Sustainable & Ethical Foundation

In 2015, the Essex Region Conservation Foundation was the first charity in the Windsor-Essex region to achieve prestigious accreditation from Imagine Canada's Standards Program for Charitable and Non-Profit Organizations. At this time, the ERCF was one of only 135 organizations across Canada that had achieved this important distinction. Imagine Canada is a national umbrella organization that establishes operating and governance guidelines for charities and non-profits in Canada. The Standards Program awards accreditation to charities and non-profits that demonstrate excellence in the areas of board governance; financial accountability and transparency; fundraising; staff management; and volunteer management.

The Standards Program is designed to strengthen the practices of Canadian charities and non-profits and increase public confidence in the sector's work through demonstrated transparency and accountability. Meeting these highest standards is important to inspire confidence and trust amongst donors and partners. A robust review of the ERCF Bylaw and associated policies was undertaken through 2021, and the application for re-accreditation was submitted for a comprehensive peer review.

In May, the Foundation received confirmation that it was successful in its application for re-accreditation, and the reviewers commended the ERCF for putting forward a strong application that demonstrated compliance in all of the areas covered by the standards.



Thank You

Event Sponsors, Participants and Donors!

Essex Region Conservation Foundation Golf Tournament

On July 21, a sold-out field of golfers teed off for conservation at Kingsville Golf and Country Club and the results were astounding. Thanks to the incredible generosity of players and sponsors, and Gold Sponsor Enbridge Gas Inc., the Essex Region Conservation Foundation Fundraising Golf Tournament raised more than \$43,000 – the highest amount raised through this tournament to date. Thank you!



Essex Region Bike Tour

On September 24, hundreds of cyclists took to the trails and streets beginning and ending at the beautiful Mettawas Park in Kingsville. This popular event is of great interest to families and the cycling community. Thanks to generous sponsors, cyclists, and donors, over \$28,000 was raised and used to support the Holiday Beach Cycling Trail. Watch for more great cycling amenities coming to our region soon!



Save The Date!

W.E.Hike 2023 – June 3

**Essex Region Conservation Foundation
Golf Tournament** – July 20

Essex Region Bike Tour – September 23

Super Santa Run – November 18



Celebrating Conservation Champions

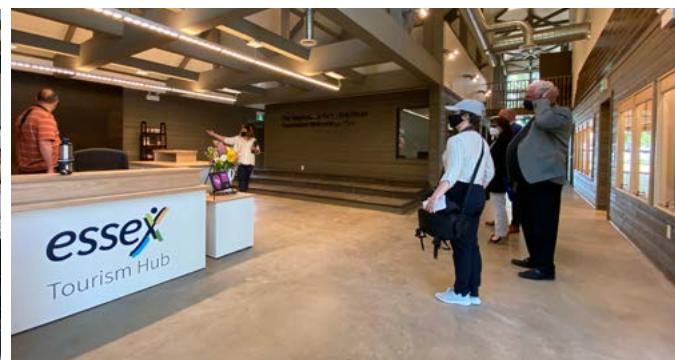
At its virtual Annual General Meeting in March 2022, the Essex Region Conservation Foundation honoured award recipients who have demonstrated an outstanding commitment to supporting conservation efforts and sustainability in the Windsor-Essex-Pelee Island region.

Clifford Hatch Conservation Foundation Award – The Stephanie & Barry Zekelman Foundation

The Stephanie & Barry Zekelman Foundation are remarkable philanthropists in the Windsor-Essex Community and beyond, including significant supporters of conservation efforts.

In 2019, they sponsored the Earth Day Traveling Road Show to connect hundreds of kids with nature during Earth Week. Later that year, they were the first major donors to the Conservation Centre at the John R. Park Homestead, with a leadership donation of \$100,000 to create the Stephanie & Barry Zekelman Foundation Welcome Centre – the first point of welcome to the Homestead’s thousands of annual visitors. Then, to ensure the building could be completed to the highest standards, the Stephanie and Barry Zekelman Foundation again stepped up with another incredible contribution of \$125,000 to support the Stephanie & Barry Zekelman Foundation Creative Commons, which is the main indoor teaching space, and will be used to help thousands of children annually understand our human connections to conservation and how we impact the world around us.

These are only a few of the reasons for which the Foundation was honoured to recognize the Stephanie & Barry Zekelman Foundation with the Clifford Hatch Conservation Foundation Award.



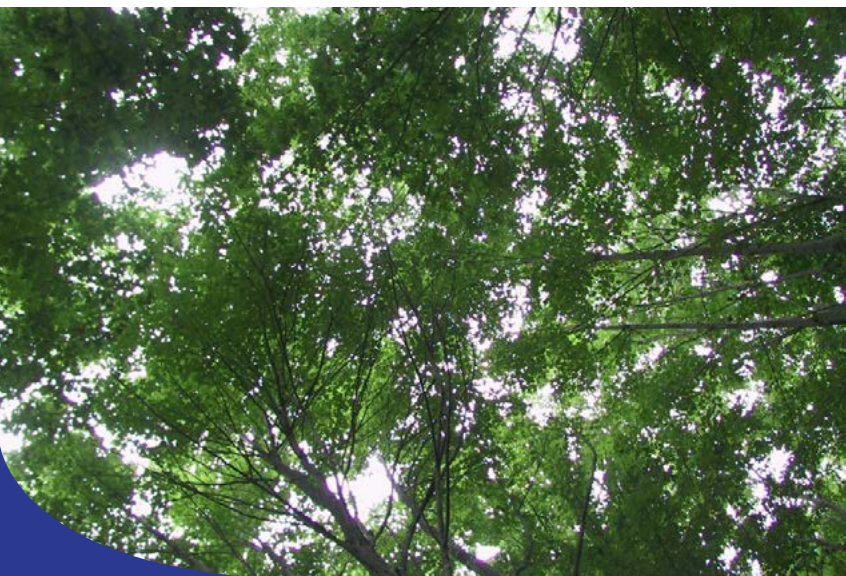
Conservation Foundation Award for Outstanding Corporate Contributions – Families First

Families First has a passionate team that builds relationships. For more than two decades, they have been giving back to the local community that they serve, and their impact is incredible.

Families First has been a longstanding supporter of the Foundation's conservation efforts. Since 2016 they have sponsored, provided design and printing services and golfer gifts to for the ERCF's Fundraising Golf Tournament. With this support, the tournament has been elevated to a new level of fundraising success, and since that time, has raised over \$240,000 dollars for conservation.

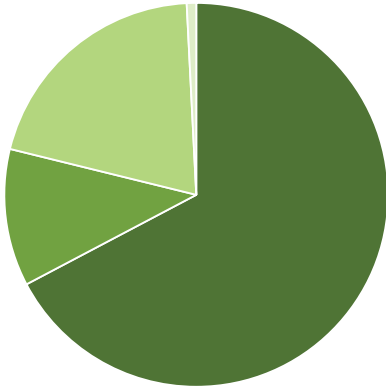
Families First also made a generous contribution to support the Conservation Centre at the Homestead, which will help connect visitors with our human and natural heritage for decades to come. In 2022, Families First partnered with the Town of LaSalle and ERCA to create a Healing Forest for all whose lives have been impacted by COVID-19.

These contributions to conservation efforts and more are just a sampling of the many and varied causes that Families First supports across the Windsor-Essex region, and the Foundation was most honoured to recognize them with this award.



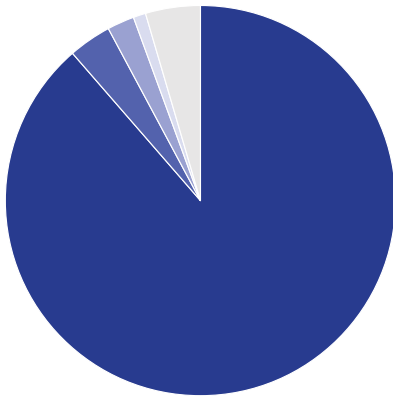
2022 Financial Highlights

2022 Revenues by Source- \$478,862
2022 Budgeted Revenues -\$457,211



Donations from Companies & Individuals (non-event)	\$322,182
Donations & Grants from Charities & Foundations	\$55,380
Fundraising Including Event Donations & Sponsorships	\$97,478
Interest Income	\$3,822

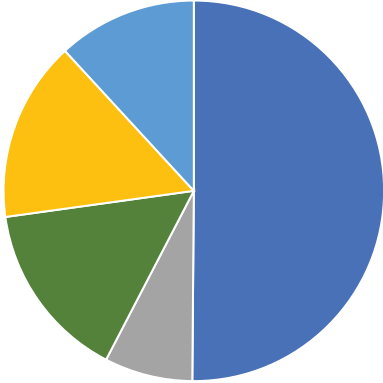
2022 Grants, Operating Expenses and Changes in Investments - \$571,793
2022 Budgeted Grants & Operating Expenses - \$503,380



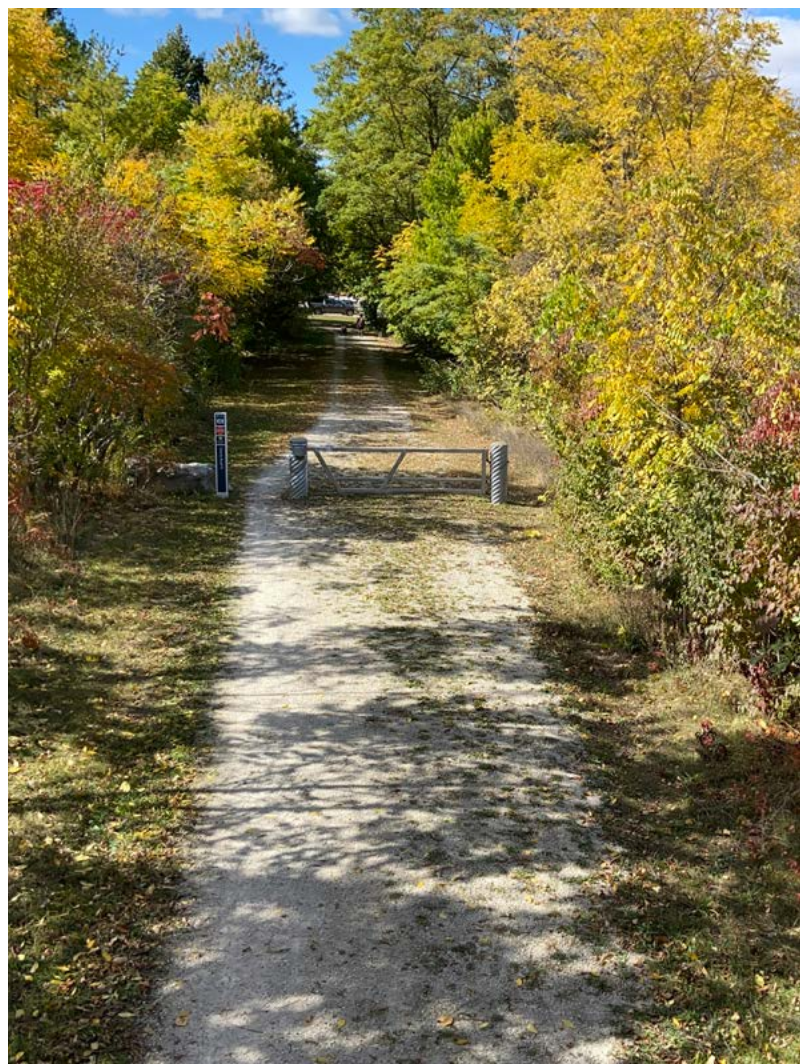
Grants to Essex Region Conservation Authority	\$506,700
Fundraising Supplies	\$20,363
Other Operating Supplies & Expenses	\$12,848
Audit & Insurance	\$5,900
Unrealized Decline in Value of Investments	\$25,982

2022 Grants by Priority - \$506,700

2022 Budgeted Grants - \$461,150



Preserving	\$254,000
Connecting	\$38,000
Greening	\$76,900
Inspiring	\$77,800
Shared Priorities / Sustainability	\$60,000



Thank You

With gratitude to the many donors making a difference in enriching and sustaining the Place for Life in 2022.

Mark Abraham
Natalie Abramovich
Philip Adamson
Advanced Wellness Centre O/B
Kimberley Alice
Barbara Allan
Patricia Allemann
Christina & Brian Allsop
Susan and Keith Andrews
Anonymous
Aqueduct Foundation
Architectural Conservancy of
Ontario- Windsor Branch
Ron Arkell
Mekayla Assef
Hened Baetens
Tom Baker
Dan Balind
James K. Ball
Tim Banks
Maralynn Beach
Sheila Beach
Vic Bellaire
Benefaction Foundation
Colin Beniston
Kenneth Bishop
Doug Blanchette
Marlo Bondy
Louis Bortolin
Harry Bosveld
C.S. Bradt
Danielle Breault Stuebing
Lisa Brkovic
Jaclyn Brush
Brad Burrows
Cindy & Tim Byrne
Caesars Windsor Employees
Susan & Jeff Campbell
Bev Camphorst
CANUE Windsor Inc. (Civic
Association of Non-Union
Employees)
Zack Carlan
John Carroccia
Joshua Cheifetz
Corinne Chiasson
Stephen Chrisomalis
Charlie Colenutt

Casey Colhurst
Nicole Collison
Brenda Conflitti
Judy Cornies
Clara Couvillon
Ken Cramer
Nancy Cristofoli
Patrick Curtis
Suzanne Dajczak
Virginia Daniels Daniels
Bill Darmon
Paul Davidson
Pearl Davies
DC McCloskey Engineering
Dean Construction Company
Michael DeBiase
Bonnie DesJardins
Sue Desjarlais
Angelina Diana
Tony DiCiocco
Sinisa Djurdjevic
Green Sun Rising
William Donnelly
Robert Douglas
Gillian Dunmore
Don Dunmore
Richard Dunn
Carl Dupuis
Heather Emery Meloche
Enbridge Gas Inc.
Jeff Evon
Facca Incorporated
Marilyn Fahringer
Marilyn Farnworth
Michael Fenchak
Melissa Fisk
Laura Fogolin
Chris Foulon
Tar Franzoi
Bettie & Gerald Fraser
Alex Friedl
Friends of the John R. Park
Homestead
Front Construction
Industries Inc.
Fran Funaro
Deborah Funtig
Rodney Gagnon

Marnie Gauthier
Amanda Gellman
Mike Gignac
Betty Gravel
Brian Green
Shirley Grondin
Joseph Haddad
Nancy & Paul Hager
Andrew Hager
Lawrence Haines
Sam Hakim
Miranda Hanna
Carolyn Hardy and Family
Marian Harvey
Dennis Hastings
Hastings LaSalle Property Inc.
Hearn Family
Ken Hedgewick
Jeffre Hewitt
Janet Hill
Timothy Hinsperger
Rick Hohendorf
Debra & Robert Honor
Todd Hopper
Hotte Marine Contracting Ltd
Thom Hunt
Kristin Ives & Jay Howard
J. D. Barnes Ltd.
Lori Jacobs
Jamieson Laboratories Ltd.
Sheldon Jarcaig
Jeff Shepley Excavating
JEO Inc.
Tania Jobin
Michael Kelleher
Henry Kimm
Marliese Kimmerle
Kin Club of Windsor Bingo
Kona Ice Windsor Essex
Dr Frank W Korody
Paulette Kupnicki
Nicole Kupnicki
Barbara Kurtz
Sherry Kwan-Hopper
Robin Lachance
Kevin Laforet
Mary Lambros
Theresa Lane

Serge Lanteigne
Jim Lapain
Cathy Lapain
Joe Lapain
Tony Lapain
Dale Larson
Ed Lepain
Rachelle Leslie
David Leslie
Nicole & Rocco Lucente
John Lucente
Vicky Lucier
Virginia Lundgren
M. Gordner Law Professional
Corporation
Kathy Macdonald
Heather MacPherson
Grant & Vera Maguire
Jennifer Maguire
Rene Malenfant
Malott's Guardian Drugs
Gianna Manzerolle
Theresa Marentette
Stephen Marentette
RoseAnn Marentette
Sue Marham
Alexa Marr
Anna Maruska
Anthony Mascaro
Heather Matisz
Jodie & Adam Matte
Bob Matte
Laura Matthias
Justin McAlpine
Robert McCormick
Debbie McGivney
Phil McKay
Mike McMahon
Julianna McMullan
Shelley McMullen & Orest
Zacerkowny
McTague Law Firm LLP
Marty Meanwell
Doug Meloche
MGV Developments (McGregor) Inc.
Kim Misener
Greg Mockler
Kathy Moffat

Gregory Mosey
Robert Mullins
Municipal Retirees Organization
of Ontario
Lindsay Nahn
Eric Naylor
Tom Neufeld
Robert Nixon
Shawn O'Keefe
Tim Oliver
Susan & Tom Omstead
Oshawa Generals Foundation
Rita Ossington
Chris Oyler
David Paik
Rich Parkinson
Susan & Terry Patterson
John Patterson
Lisa Pavan
Josephine Pavan
Lawrence Pazner
Andy Pears
Steven Peirone
Matthew Peirone
Terri Peirone
Amy Peirone
Pelee Lighthouse Life
& Financial
Sandra Pelka
Shelley Persichilli
Ewald Petershofer
Karen Peterson
Petretta Construction Inc.
Terry and Ozzie Pillon

Amy E. Pinsonneault
Marc Pinsonneault
Trevor Pitcher
Trevor Pittman
Excalibur Plastics
Barb Pollard
Jim Potter
Todd Queen
Kimberley Quinn
Rafih Auto Group (Overseas
Motors Inc.)
Stephen Ray
Laura Reaume
Reko Manufacturing Group
Cynthia Relf
Jeff Renaud
Tom Rennie
Maryann Rennie
Gary Rennie
Stephanie Rhea
Graham Rickers
Rinker Materials
Rivard Engineered Products Inc.
Philip Roberts
David Robins
Michael Robinson
Jessica Robson
Kim Rocheleau
ROCK Developments
Lee Rodney
Rosati Construction Ltd.
Kate Rosser-Davies
Peter Roth
Andrew Rowberry

Allison Rusling-Bigelow
Paul Santos
John Sawatsky
Ed Scherer
Martha Schiller
Hedwig & Walter Schmoranz
Al Scott
David Scott
Richard Scratch
Susan & David Sellick
Keith Simison
David Sippala
Ed Sleiman
Keirsten Smith
Linda & Robert Smith
Terrance Soanes
Ryan Michael Solcz
Kathy Squire
Katie Stammeler
Mindy Stewart
Susan Stockwell Andrews
Tamara Stomp
Lloyd Strong
Harvey Strosberg
Sutts, Strosberg, LLP
Andrew Swan
Andrew Tepperman
The Grove Brewing Corporation
The Stephanie & Barry
Zekelman Foundation
The Toldo Foundation
Becky Thompson
Bill Thompson
Peter Thomson

Tilray Group
Timberland General Contractors
Settimo Tocco
Dejan Todorovic
Luna Tomasini
Tourism Windsor Essex Pelee
Island (TWEPI)
David Tremblay
Robert Troup
Truax Construction
Jennifer Trymbulak
Lisa Tytgat
Marietta Underwood
Patrick Valcke
Kim Verdam
John Vollmer
Valerie Vriesen
Eric Vriesen
Bryce Vriesen
Kathy & Rick Vriesen
Gerrit Vriesen
Kathryn Watton
Brent Wilson
Windsor Copier Inc. KELCOM
Windsor Family Credit Union
Windsor Modules a Division of
Magna Mechatronics
WindsorEssex Community
Foundation
John Wink
Janet & John Woodbridge
Richard Wyma
Arthur Yanamoto

In Memory Of

Alexander Aitken
Becky Akers
Xavier Stefan Alvarez
Jim Battersby
Ron Beaudoin
Gregory Thomas Blondin
John Brimacombe
Slobodan Brkovic
Delores Burstyn
Don Bury
John Carlan
Elaine Coleman
Fran Damore

Colleen Dougan
Walt Edwards
Diane Oi Yee Gene
Ronald Gibb
Keith Goegebeur
Donald Gonczy
Jeanne (Botsford) Janisse
Faye Johnson
Ivan Krmpotic
Ulrike Kuprath
Stjepan Laslavic
Ingrid Lahey
Gerald Levitt

Amanda (Loannidis) Lyons
Blair Lyons
Edna Meades
Jim Morneau
Audrey Morrison
Alena Rose Muegge
Joe and Jesse Mullins
James (Jim) Murray
Audrey Ouditt
Rien thi Pham
Edward (Ed) Poolton
Marjorie Pullin
Dale Ripley

Tim Robson
Ghislaine Denise Roy
Tim Rusling
Major Sheikh Khurram Saleem
Jean Stewart
Lydia Stockwell
Arthur (Art) Stone
Diane Stuart
Vasilios (Billy) Tsopotos
Wilfred & Therese Villemaire
Mollie Weir
Dick Wilhelm
Nel Anne Karlechuk Yaworsky





Contact Us

360 Fairview Avenue West, Suite 311
Essex, Ontario, N8M 1Y6
P: 519-776-5209 F: 519-776-8688
essexregionconservation.ca/foundation



[@EssexRegionCA](https://twitter.com/EssexRegionCA)



[@EssexRegionConservation](https://www.instagram.com/EssexRegionConservation)



facebook.com/EssexRegionConservation



youtube.com/TheEssexRegionCA

ERCF Board Members

Claire Wales, *President*

Brian Parent, *Vice President*

Susan Stockwell-Andrews, *Past President*

Tim Byrne, *Executive Director / Secretary*

Amanda Gellman, *Treasurer*

Meghan Boschin

Eric Naylor

Tony Rosati

Suzanne Dajczak

John Omstead

Dan St. Denis

Pearl Davies

Terry Patterson

Terry Fink

David Robins

Ken Schmidt, *Honourary Life Member*

Tania Jobin, *ERCA Ex Officio*

Sue Desjarlais, *ERCA Ex-Officio*